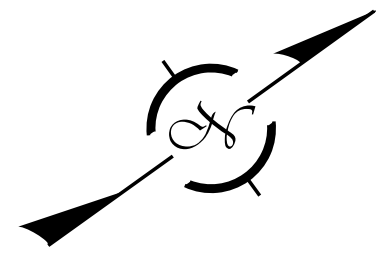
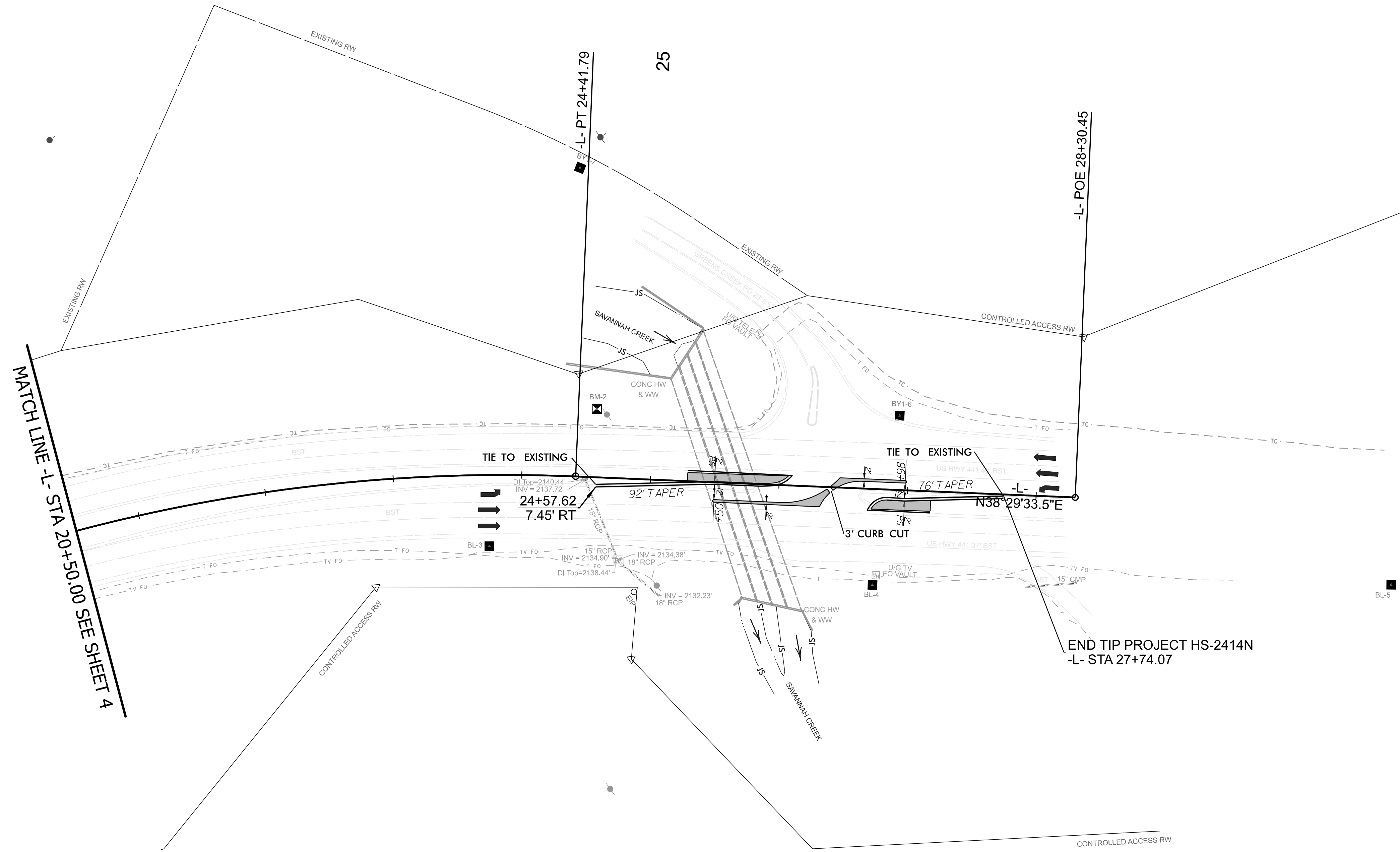


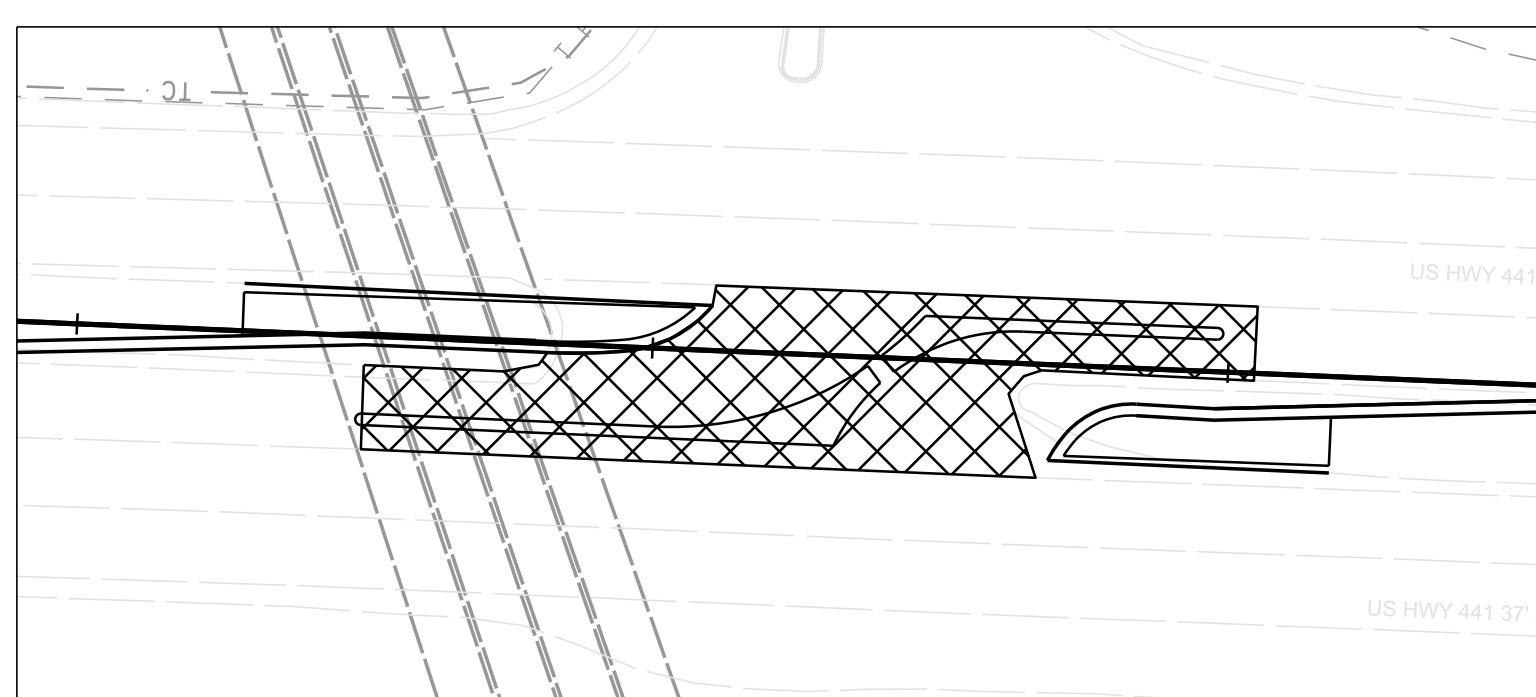
DOCUMENT NOT CONSIDERED FINAL UNLESS ALL SIGNATURES COMPLETED



MATCH LINE -L- STA 20+50.00 SEE SHEET 4

END TIP PROJECT HS-2414N -L- STA 27+74.07

CUR DATA -L-
 Plc 20+72.02
 $\Delta c = 33^\circ 35' 26.1''$ (RT)
 $D = 04^\circ 24' 26.5''$
 $Lc = 762.15$
 $Tc = 392.38$
 $R = 1,300$
 $SE = 0.000$



NOTE: USE ASPHALT CONCRETE SURFACE COURSE TYPE S9.5C (LEVELING COURSE) AS DIRECTED BY THE ENGINEER TO ALLOW FOR POSITIVE DRAINAGE.

- SEE DETAIL SHEET 2B-1 FOR ISLAND LAYOUT
- S9.5C LEVELING COURSE
- PROP MONOLITHIC CONC ISLAND
- FOR -L- PROFILE, SEE SHEET 6